
City of Fort Saskatchewan Census Results 2012



CITY OF
FORT SASKATCHEWAN
ALBERTA

gotta  *it!*

Introduction

The 2012 Municipal Census was conducted by the City of Fort Saskatchewan, Corporate Services Department, Legislative Services Section.

This report provides data collected between April 30, 2012 and June 8, 2012 on population, age and gender as well as other information. More information on the 2012 Municipal Census can be obtained from:

Vivienne MacIntyre
Director, Legislative Services
City of Fort Saskatchewan
10005 - 102 Street
Fort Saskatchewan, AB T8L 2C5

Website: www.fortsask.ca

Methods

For the first time, under the supervision of the Legislative Services Section of the Corporate Services Department, residents were able to complete the census online.

Enumerators only visited households that did not submit an electronic census by May 21, 2012 and entered the information electronically right at their door. The City contracted the City of Airdrie to host the online 2012 municipal census.

This report presents the results of the census in tables and figures. Where possible, census data from 2010, 2009, 2008 and 2007 are provided for comparison and to identify population trends.

Results

Total Population

The total population of Fort Saskatchewan as of April 30, 2012 was 20,475 (Table 1). This includes 492 residents of the Fort Saskatchewan Correctional Centre. The population increased by 1,822 residents from 2010 to 2012, which represents an increase of 9.77 percent (Table 2).

Table 1. Total population

Year	2012	2010	2009	2008	2007
Population	20,475	18,653	17,469	16,793	16,146

Table 2. Annual percent increase in population

Census Year	Percent Increase
2012	9.77
2010	6.78
2009	4.03
2008	4.01
2007	4.98
2005	3.12
2003	1.25
2000	0.82
1998	1.29
1993	1.17

Population by Gender

The proportion of males in Fort Saskatchewan has decreased over the past two years. In 2012, 50.5 percent of the population is male, while 47.7 percent is female (Table 3).

Table 3. Population by gender

Gender	2012		2010		2009		2008		2007	
	N	%	N	%	N	%	N	%	N	%
Male	10,330	50.5	9,695	52.0	8,954	51.3	8,615	51.3	8,195	50.8
Female	9,765	47.7	8,950	48.0	8,507	48.7	8,178	48.7	7,951	49.2
Not Stated	380	1.8	8	0.0	8	0.0	0	0.0	0	0.0
Total	20,475	100.0	18,653	100.0	17,469	100.0	16,793	100.0	16,146	100.0

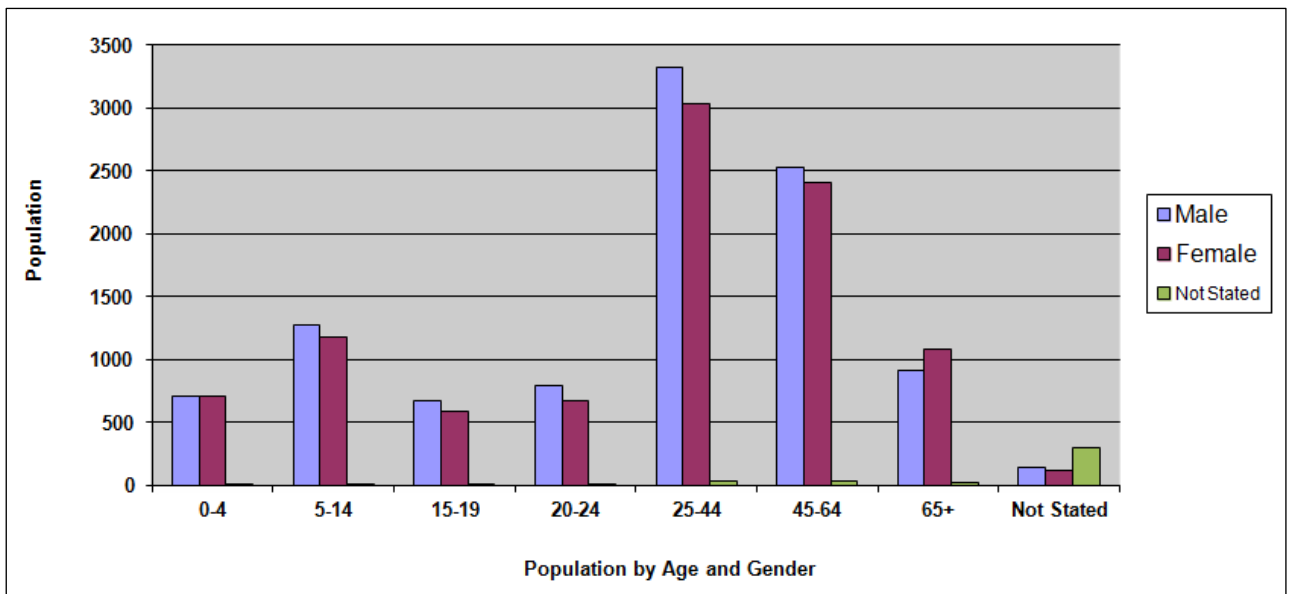
Population by Age and Gender

Table 4 and Figure 1 show that the 25-44 age group includes the most residents, followed by the 45-64 age group.

Table 4. Population by age and gender

Gender	Age	2012		2010		2009		2008		2007	
		N	%	N	%	N	%	N	%	N	%
Male	0-4	704	3.3	600	3.1	542	3.1	520	3.1	471	2.9
	5-14	1,273	6.2	1,183	6.3	1,138	6.5	1,096	6.5	1,113	6.9
	15-19	672	3.3	608	3.3	652	3.7	654	3.9	672	4.2
	20-24	794	3.9	767	4.1	726	4.2	726	4.3	644	4.0
	25-44	3,321	16.2	3,144	16.9	2,779	15.9	2,502	14.9	2,409	14.9
	45-64	2,522	12.3	2,562	13.7	2,334	13.4	2,199	13.1	2,172	13.5
	65+	909	4.4	828	4.4	783	4.5	738	4.4	714	4.4
	Not Stated	135	0.7	3	0.0	0	0.0	0	0.0	0	0.0
Female	0-4	706	3.5	588	3.2	528	3.0	484	2.9	452	2.8
	5-14	1,174	5.7	1,037	5.6	1,044	6.0	1,039	6.2	1,024	6.3
	15-19	582	2.8	590	3.2	600	3.4	602	3.6	615	3.8
	20-24	672	3.3	669	3.6	625	3.6	573	3.4	556	3.4
	25-44	3,030	14.8	2,793	15.0	2,606	14.9	2,397	14.3	2,320	14.4
	45-64	2,411	11.8	2,291	12.3	2,148	12.3	2,031	12.1	2,071	12.8
	65+	1,077	5.3	980	5.3	956	5.5	911	5.4	913	5.7
	Not Stated	113	0.6	2	0.0	0	0.0	0	0.0	0	0.0
Not Stated		380	1.9	8	0.0	8	0.0	321	1.9	0	0.0
Total		20,475	100.0	18,653	100.0	17,469	100.0	16,793	100.0	16,146	100.0

Figure 1. Population by age and gender



Household Size

The most common household size is two people (Table 5).

Table 5. Household size

Size	2012		2010		2009		2008		2007	
	N	%	N	%	N	%	N	%	N	%
1 Person	1,711	21.9	1,472	21.0	1,345	20.6	1,294	20.7	1,225	20.5
2 People	2,908	37.3	2,607	37.1	2,413	36.9	2,298	36.8	2,192	36.6
3 People	1,274	16.3	1,150	16.4	1,101	16.9	1,051	16.8	994	16.6
4 People	1,276	16.4	1,184	16.9	1,096	16.8	1,060	17	1,055	17.6
5 People	451	5.8	435	6.2	413	6.3	388	6.2	371	6.2
6+ People	178	2.3	167	2.4	165	2.5	159	2.5	153	2.5
Total	7,798	100.0	7,015	100.0	6,533	100.0	6,250	100.0	5,990	100.0

Profile of Dwellings

The total number of Fort Saskatchewan dwellings in 2012 was 8,534. The occupancy rate is 91.4 percent and the vacancy rate is 6.3 percent as shown in Table 6. There were also 477 vacant lots (not shown in table).

Table 6. Profile of dwellings

Status	2012		2010		2009		2008		2007	
	N	%	N	%	N	%	N	%	N	%
Occupied	7,798	91.4	7,015	90.2	6,533	88.2	6,250	87.0	5,990	90.4
Vacant Dwelling	534	6.3	492	6.3	538	7.3	346	4.8	194	2.9
Under Construction	202	2.3	269	3.5	335	4.5	590	8.2	444	6.7
Total	8,534	100.0	7,776	100.0	7,406	100.0	7,186	100.0	6,628	100.0

Table 7. Dwelling ownership

Status	2012	
	N	%
Owned	5,491	70.5
Rented	1,799	23.2
Not Stated	508	6.3
Total	7,798	100.0

Occupied Dwellings only

Dwelling Type

Single detached houses remain the predominant type of dwelling in Fort Saskatchewan (Table 8). The proportion of single detached, apartment, row house, tri/quadrplex and row house are all showing a decrease since 2010 as vacant dwellings in the amount of 534, were not classified by type on the 2012 responses and there was a total of 215 no responses for this question.

Table 8. Dwelling types

Type	2012		2010		2009		2008		2007	
	N	%	N	%	N	%	N	%	N	%
Single Detached	4,791	61.4	4,872	62.6	4,637	62.6	4,540	63.2	4,360	65.8
Apartment	1,282	16.4	1,467	18.9	1,450	19.6	1,474	20.5	1,179	17.8
Duplex	837	10.7	721	9.3	610	8.2	553	7.7	440	6.6
Row House	495	6.3	574	7.4	546	7.4	560	7.8	564	8.5
Tri/Quadrplex	82	1.1	98	1.3	105	1.4	55	0.8	81	1.2
Mobile Home	1	0.0	1	0.0	0	0.0	1	0.0	1	0.0
Secondary Suite*	91	1.2	40	0.5	54	0.7				
Other**	4	0.1	3	0.0	4	0.1	3	0.0	3	0.1
Not Stated	215	2.8								
Total	7,798	100.0	7,776	100.0	7,406	100.0	7,186	100.0	6,628	100.0

* 'Secondary Suite' was a new category in 2009. It includes separate suites in single detached houses and single dwellings attached to non-residential structures.

** 'Other' includes institutions and collective dwellings

Employment Status

The Employment Status results show that 44.2 percent of respondents are employed full time and that Fort Saskatchewan has a 1.6 percent unemployment rate.

Table 9. Employment status by gender

Employment status	2012				
	Male	Female	Not Stated	Total	%
Employed Full-time	5,562	3,463	43	9,068	44.2
Employed Part-time	443	1,164	9	1,616	7.9
Homemaker	6	902	4	912	4.5
Other	388	429	4	821	4.0
Permanently Unable to work	73	84	1	158	0.8
Retired	957	1,185	23	2,165	10.6
Unemployed, seeking work	171	156	2	329	1.6
Not Stated	753	502	277	1,532	7.5
Not Eligible to Answer *	1,977	1,880	17	3,874	18.9
Total	10,330	9,765	380	20,475	100.0

Question was added in 2012 census

*Responses from Age 0-14 are counted as Not Eligible to Answer and omitted from the graph

Figure 2. Employment status

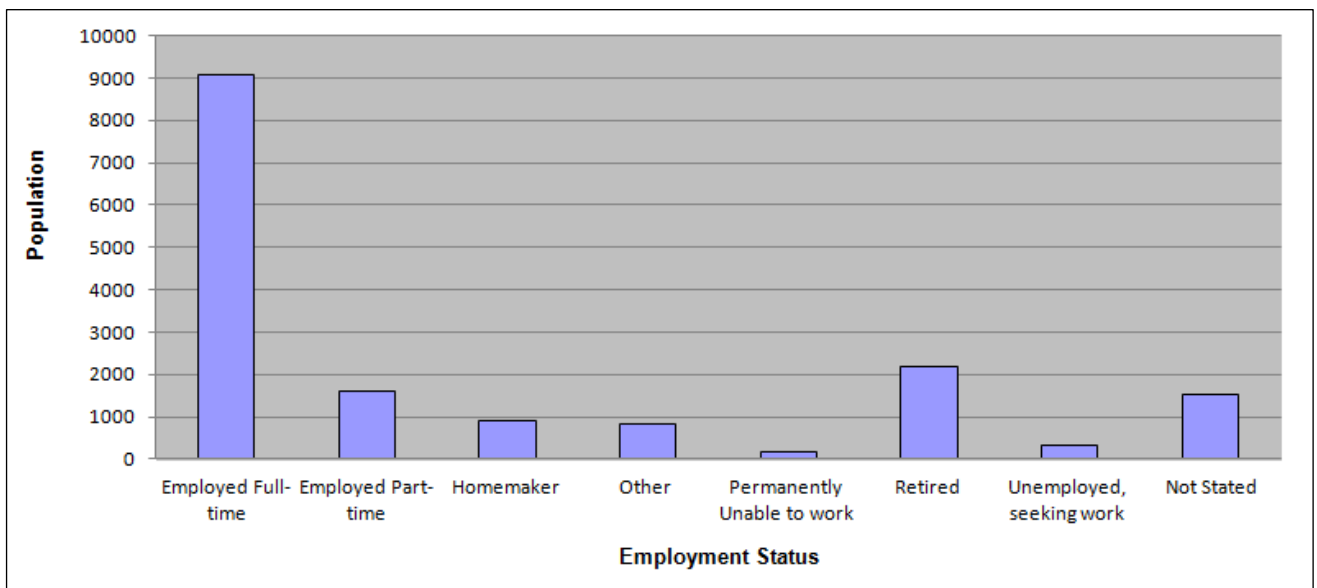


Figure 3. Employment status by gender

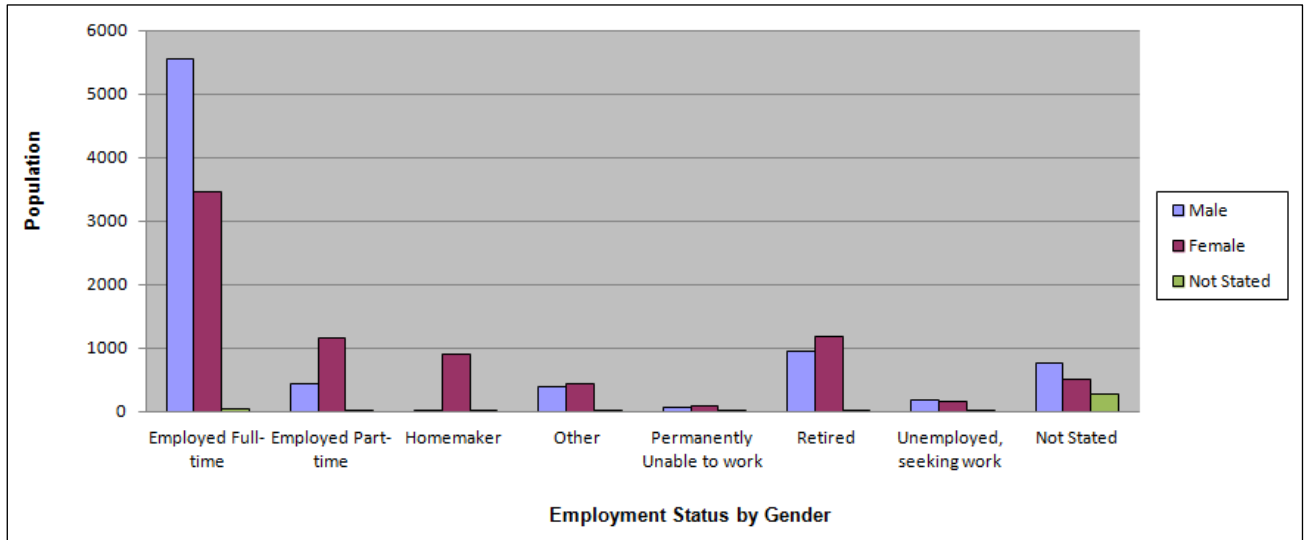


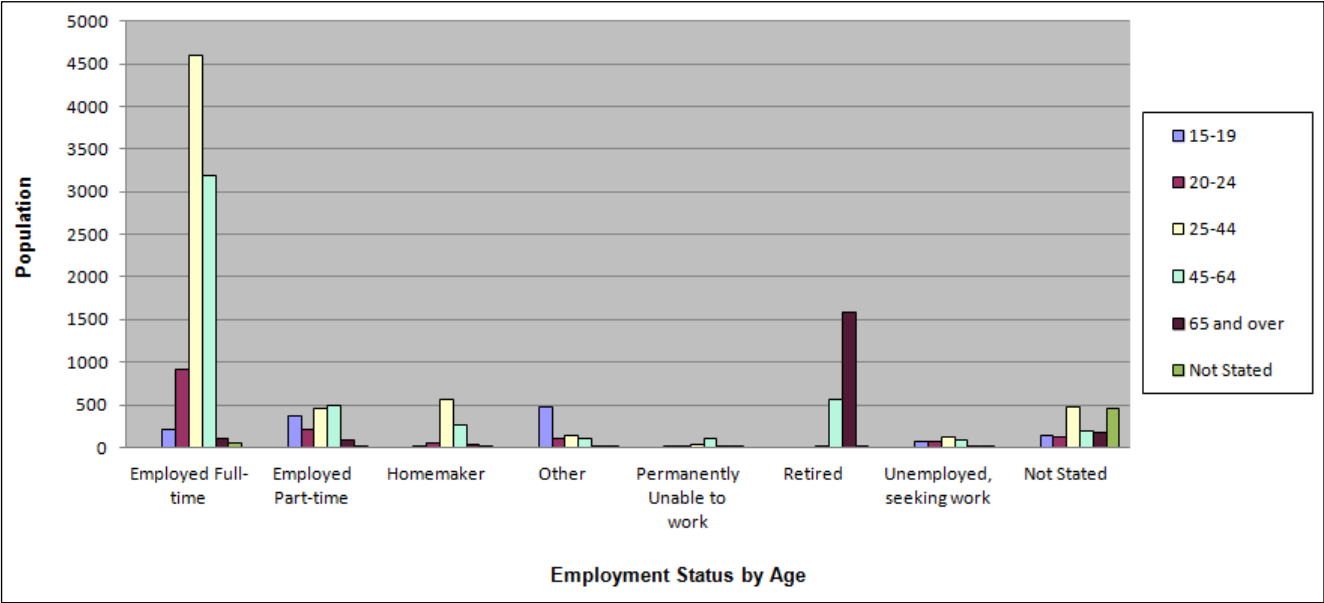
Table 10. Employment status by age

Employment status	2012							
	0-4	5-14	15-19	20-24	25-44	45-64	65 and over	Not Stated
Employed Full-time			201	915	4,606	3,184	111	51
Employed Part-time			372	202	450	494	92	6
Homemaker			5	56	561	260	27	3
Other			473	108	133	95	9	3
Permanently Unable to work			5	6	40	102	4	1
Retired					4	555	1,583	23
Unemployed, seeking work			67	63	116	80	2	1
Not Stated			132	120	469	188	173	450
Not Eligible to Answer *	1,419	2,455						
Total	1,419	2,455	1,255	1,470	6,379	4,958	2,001	538

Question was added in 2012 census

*Responses from Age 0-14 are counted as Not Eligible to Answer and omitted from the graph

Figure 4. Employment status by age



Employment Location

Table 11 shows that 27.7 percent of respondents work locally within Fort Saskatchewan.

Table 11. Employment location by gender

Employment Location	2012				
	Male	Female	Not Stated	Total	%
Beaumont	1			1	0.0
Bon Accord	2	5		7	0.0
City of Leduc	18	4		22	0.1
County of Leduc	76	18	1	95	0.5
County of Parkland	2			2	0.0
Devon	1	1		2	0.0
Downtown Edmonton	263	425	6	694	3.4
Fort Saskatchewan	2,510	3,125	27	5,662	27.7
Gibbons	10	14		24	0.1
Legal	2	1		3	0.0
M.D. of Sturgeon	59	23	1	83	0.4
Morinville	6	8		14	0.1
NE Edmonton	436	319	1	756	3.7
No Usual Place of Work	414	136	1	551	2.7
NW Edmonton	295	159	5	459	2.2
Other Municipality in Alberta	590	143		733	3.6
Other Province in Canada	42	15	2	59	0.3
Outside Canada	18			18	0.1
Redwater	165	40		205	1.0
Rural Strathcona County	185	80		265	1.3
SE Edmonton	377	193	4	574	2.8
Sherwood Park	348	383	2	733	3.6
Spruce Grove	8	1		9	0.0
St. Albert	35	42		77	0.4
Stony Plain	1	2		3	0.0
SW Edmonton	145	91	1	237	1.2
Works at Home	39	226		265	1.3
Not Stated	2,305	2,431	312	5,048	24.7
Not Eligible to Answer *	1,977	1,880	17	3,874	18.8
Total	10,330	9,765	380	20,475	100.0

Question was added in 2012 census

*Responses from Age 0-14 are counted as Not Eligible to Answer and omitted from the graph

Figure 5. Employment location

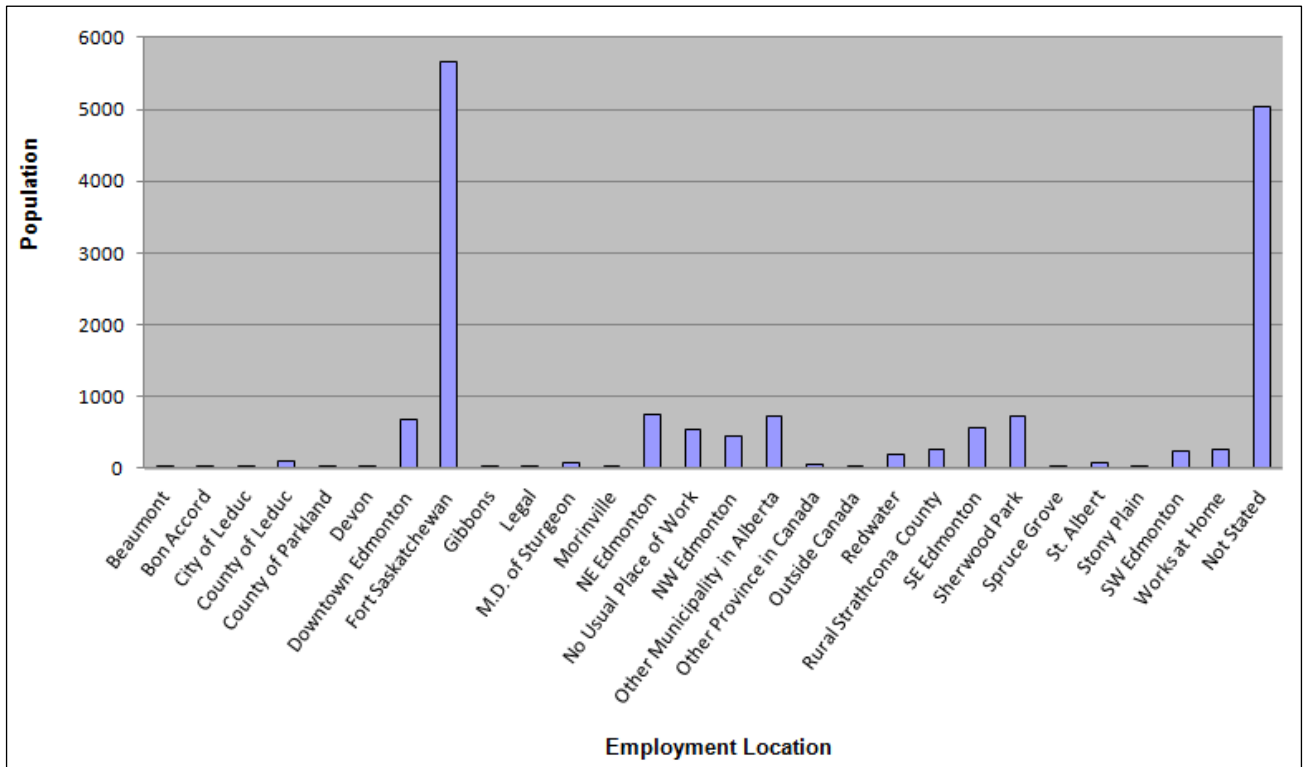


Figure 6. Employment location by gender

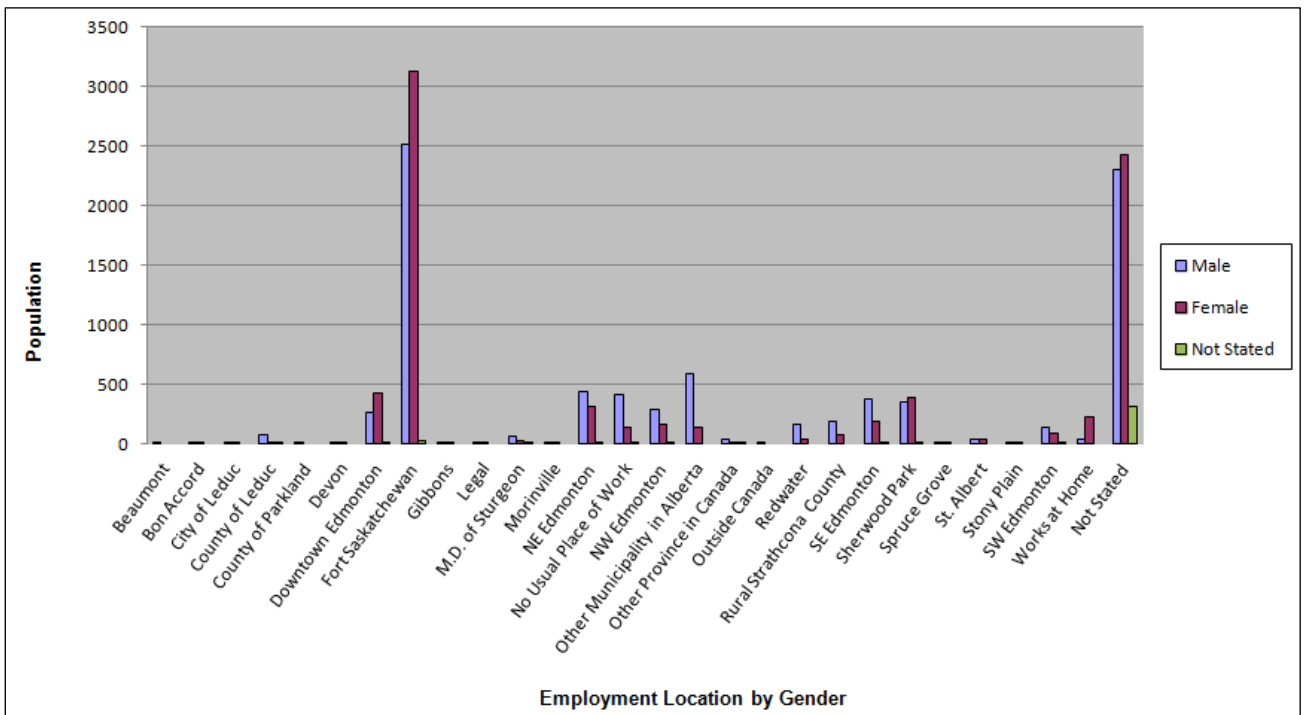


Table 12. Employment location by age

Employment Location	2012							
	0-4	5-14	15-19	20-24	25-44	45-64	65 and over	Not Stated
Beaumont			1					
Bon Accord					4	3		
City of Leduc			1	3	12	6		
County of Leduc			3	12	48	31	1	
County of Parkland				1	1			
Devon					1	1		
Downtown Edmonton			9	55	334	290	5	1
Fort Saskatchewan			634	610	2,381	1,882	131	24
Gibbons				6	13	4	1	
Legal					3			
M.D. of Sturgeon			2	8	34	35	4	
Morinville					7	6	1	
NE Edmonton			9	75	417	245	9	1
No Usual Place of Work			62	53	253	165	16	2
NW Edmonton			11	44	245	146	11	2
Other Municipality in Alberta			17	64	388	243	16	5
Other Province in Canada			1	7	25	25	1	
Outside Canada				1	7	10		
Redwater			8	24	91	78	2	2
Rural Strathcona County			13	32	122	95	3	
SE Edmonton			20	62	301	186	3	2
Sherwood Park			39	74	383	223	12	2
Spruce Grove				1	2	6		
St. Albert			2	16	41	17	1	
Stony Plain					1	2		
SW Edmonton			15	33	114	68	7	
Works at Home			2	8	155	88	9	3
Not Stated			406	281	996	1,103	1,768	494
Not Eligible to Answer*	1,419	2,455						
Total	1,419	2,455	1,255	1,470	6,379	4,958	2,001	538

Question was added in 2012 census

* Responses from Age 0-14 are counted as Not Eligible to Answer

Length of Residency

The 2012 Census included a question on the length of residency within Fort Saskatchewan showing 33.6 percent of respondents have lived here 10 years or longer.

Table 13. Length of residency by gender

Length of Residency	2012				
	Male	Female	Not Stated	Total	%
Less than 6 months	415	328	4	747	3.6
6 months to less than 1 year	513	458	4	975	4.8
1 year to less than 2 years	596	554	6	1,156	5.6
2 years to less than 5 years	1,355	1,321	22	2,698	13.2
5 years to less than 10 years	1,207	1,214	18	2,439	11.9
10 or more years	3,400	3,453	35	6,888	33.6
Not Stated	867	557	274	1,698	8.4
Not Eligible to Answer*	1,977	1,880	17	3,874	18.9
Total	10,330	9,765	380	20,475	100.0

Question was added in 2012 census

*Responses from Age 0-14 are counted as Not Eligible to Answer and omitted from the graph

Figure 7. Length of residency

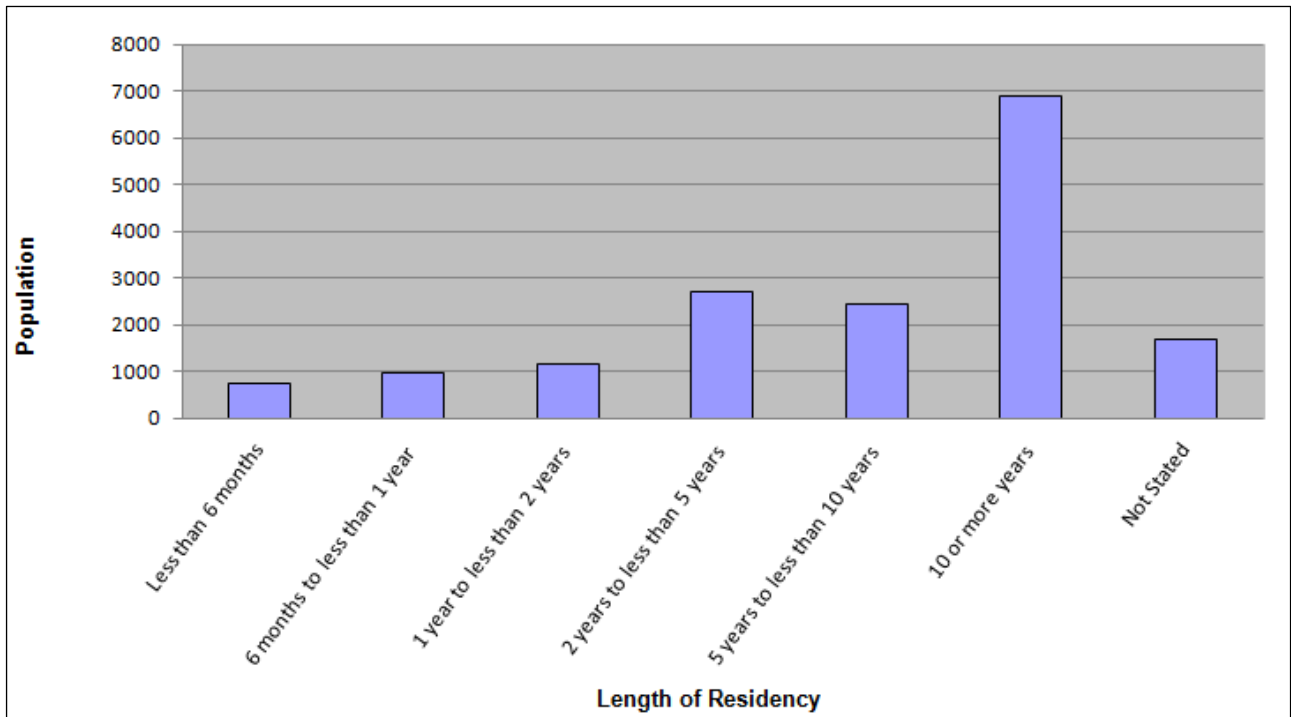


Figure 8. Length of residency by gender

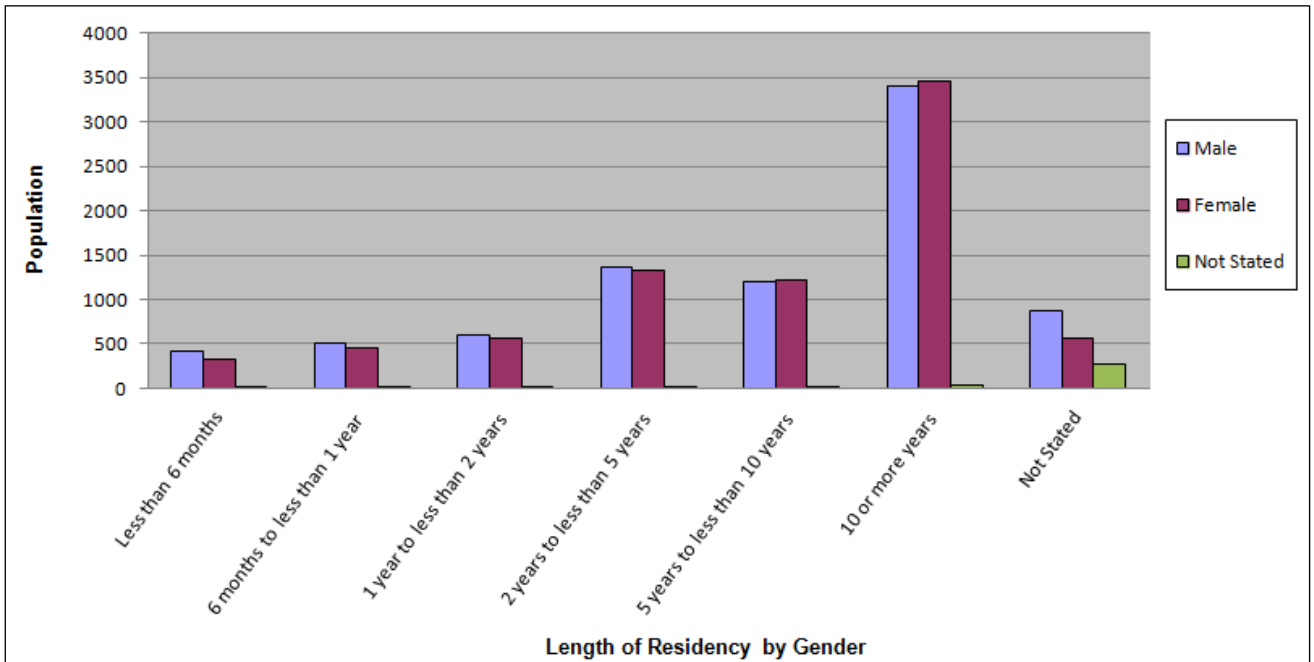


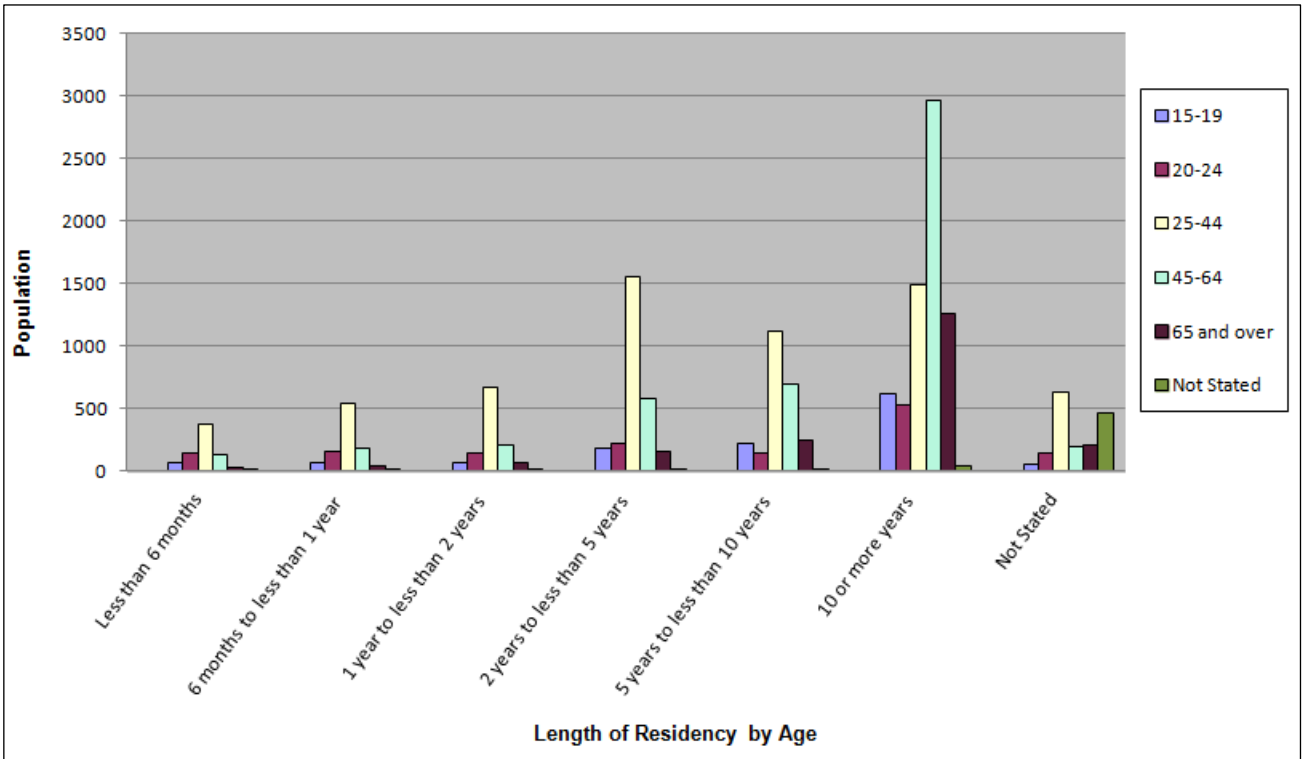
Table 14. Length of residency by age

Length of Residency	2012							
	0-4	5-14	15-19	20-24	25-44	45-64	65 and over	Not Stated
Less than 6 months			65	141	378	136	24	3
6 months to less than 1 year			62	150	542	179	39	3
1 year to less than 2 years			67	145	665	213	65	1
10 or more years			612	530	1,488	2,955	1,260	43
2 years to less than 5 years			181	225	1,551	576	152	13
5 years to less than 10 years			218	139	1,122	699	249	12
Not Stated			50	140	633	200	212	463
Not Eligible to Answer*	1,419	2,455						
Total	1,419	2,455	1,255	1,470	6,379	4,958	2,001	538

Question was added in 2012 census

* Responses from Age 0-14 are counted as Not Eligible to Answer and omitted from the graph

Figure 9. Length of residency by age



Education

The predominant level of education in Fort Saskatchewan is a High School diploma at 18.5 percent followed by a Post Secondary Diploma or certificate at 15.6 percent while 9.7 percent have a university degree.

Table 15. Level of education by gender

Education Level	2012				
	Male	Female	Not Stated	Total	%
Grade K-8	65	81	4	150	0.7
Some High School	868	734	5	1,607	7.8
High School Diploma	1,803	1,969	21	3,793	18.5
Some College/Tech.	1,380	1,059	9	2,448	12.0
Post Sec. Dip./Cert.	1,695	1,473	19	3,187	15.6
Some University	361	407	2	770	3.8
University degree	810	1,158	10	1,978	9.7
Other	101	53	2	156	0.8
Not Stated	1,270	951	291	2,512	12.2
Not Eligible to Answer*	1,977	1,880	17	3,874	18.9
Total	10,330	9,765	380	20,475	100.0

Question was added in 2012 census

*Responses from Age 0-14 are counted as Not Eligible to Answer and omitted from the graph

Figure 10. Level of education

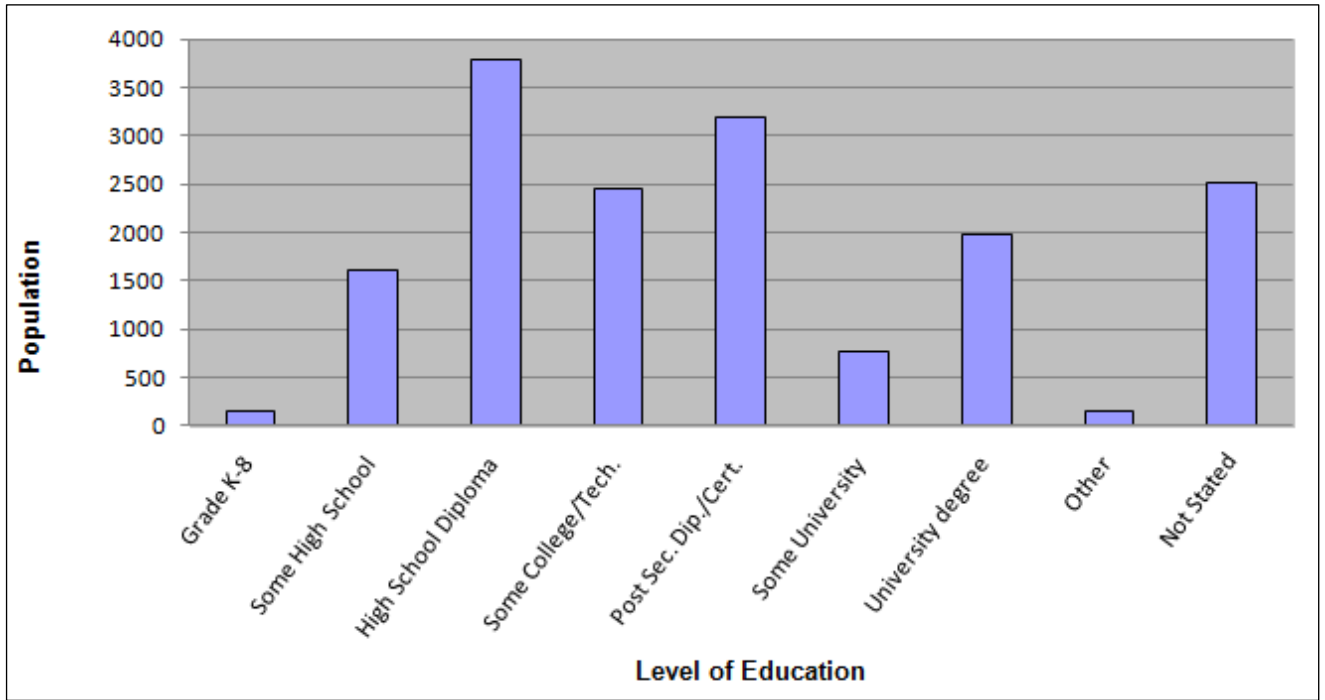


Figure 11. Level of Education by gender

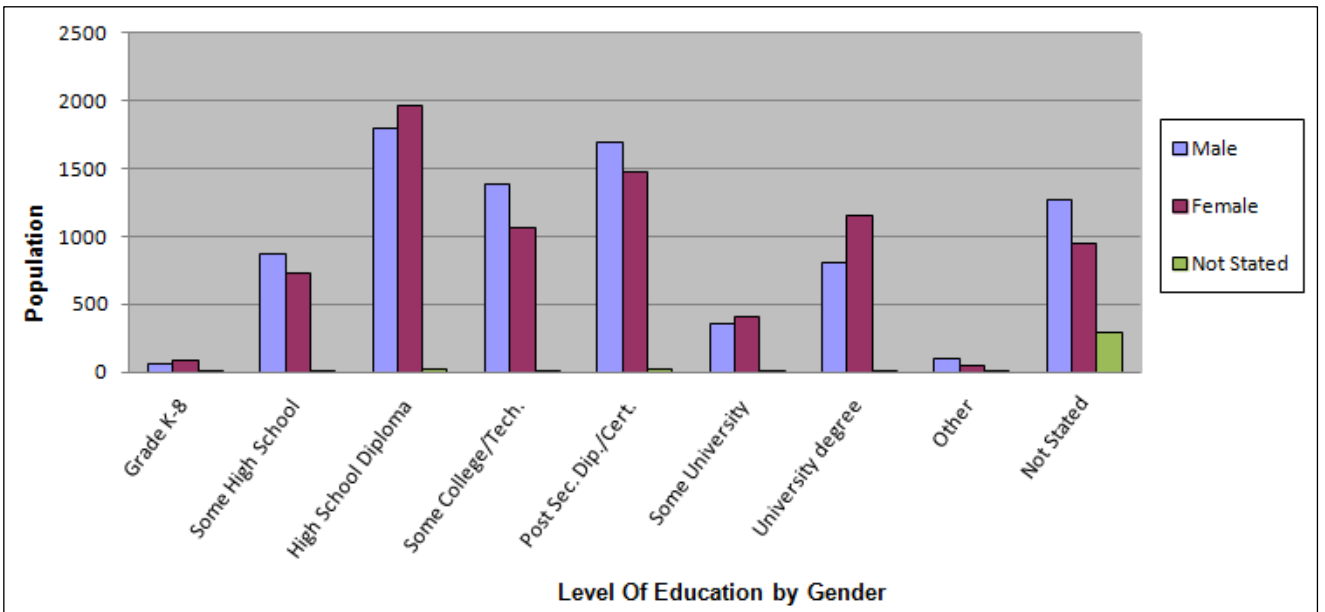


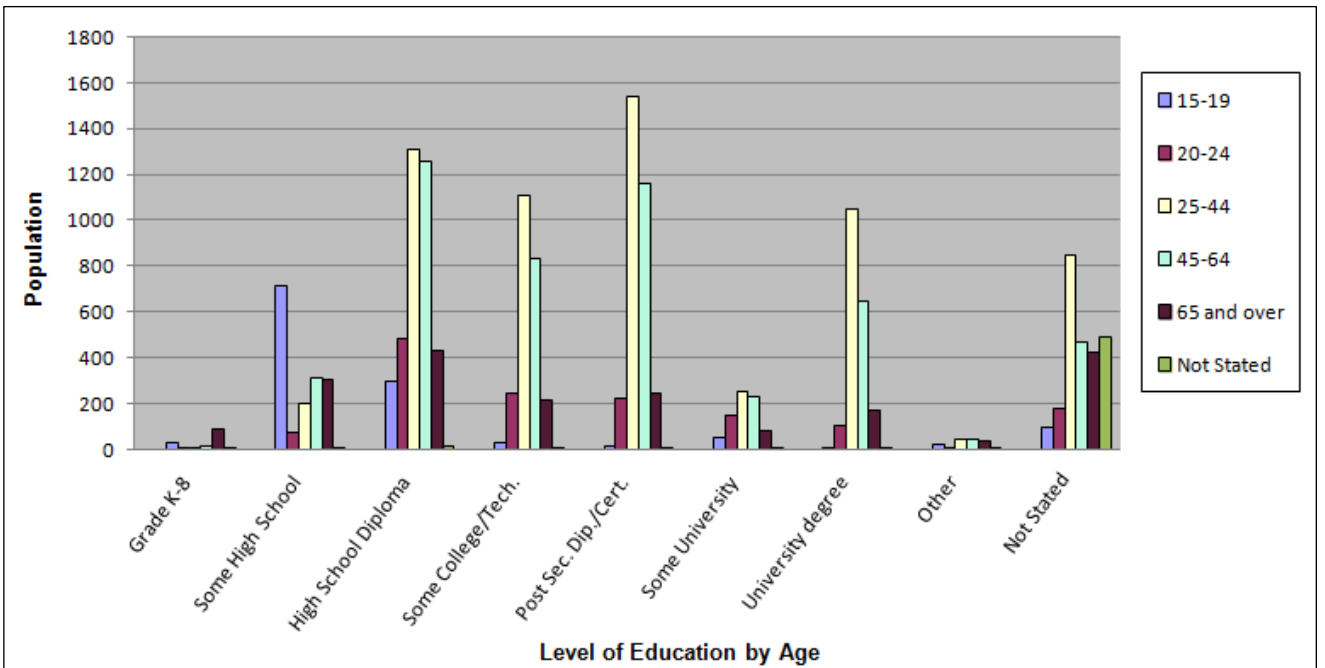
Table 16. Level of education by age

Education Level	2012							
	0-4	5-14	15-19	20-24	25-44	45-64	65 and over	Not Stated
Grade K-8			31	1	9	15	92	2
Some High School			711	75	203	308	304	6
High School Diploma			297	483	1,310	1,258	432	13
Some College/Tech.			29	247	1,111	834	218	9
Post Sec. Dip./Cert.			12	226	1,543	1,157	241	8
Some University			54	147	255	229	84	1
University degree			1	105	1,051	648	167	6
Other			22	5	46	43	37	3
Not Stated			98	181	851	466	426	490
Not Eligible to Answer*	1,419	2,455						
Total	1,419	2,455	1,255	1,470	6,379	4,958	2,001	538

Question was added in 2012 census

*Responses from Age 0-14 are counted as Not Eligible to Answer and omitted from the graph

Figure 12. Level of education by age



Language Spoken at Home

The 2012 Census shows that 73.4 percent of the residents in Fort Saskatchewan speak English at home.

Table 17. Language spoken at home by gender

Language spoken at Home	2012				
	Male	Female	Not Stated	Total	%
English	7,571	7,359	101	15,031	73.4
French	61	51	1	113	0.6
Other	132	141	3	276	1.3
Not Stated	589	334	258	1,181	5.8
Not Eligible to Answer*	1,977	1,880	17	3,874	18.9
Total	10,330	9,765	380	20,475	100.0

Question was added in 2012 census

* Responses from Age 0-14 are counted as Not Eligible to Answer and omitted from the graph

Figure 13. Language spoken at home

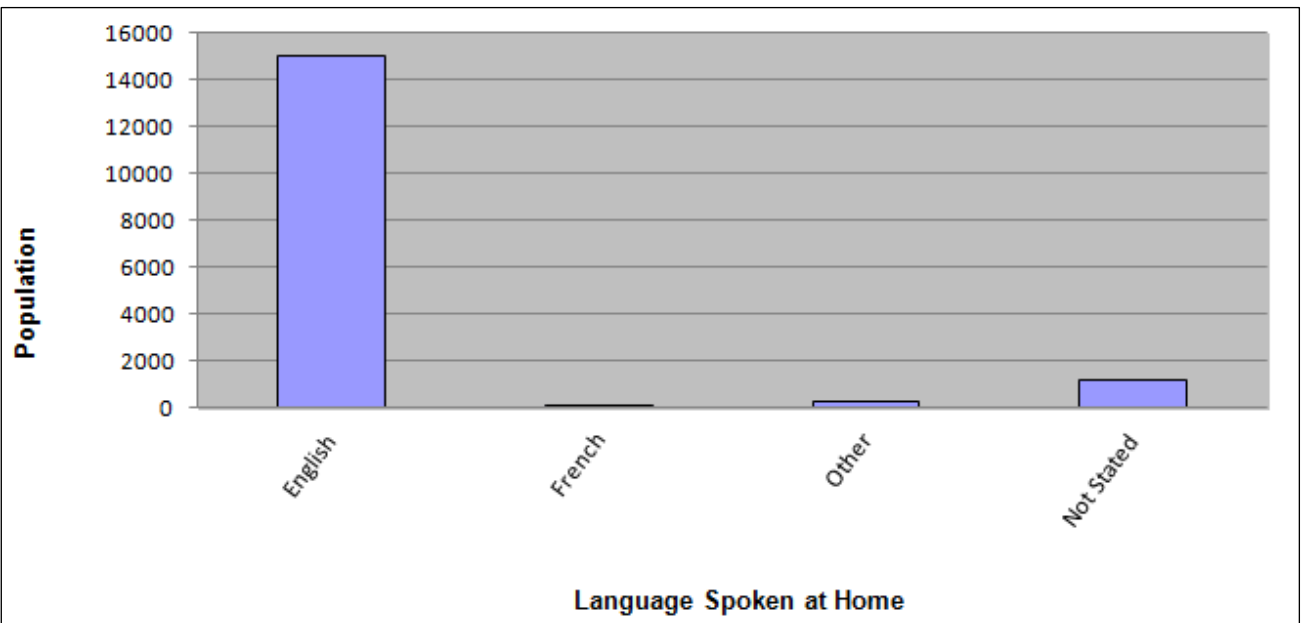


Figure 14. Language spoken at home by gender

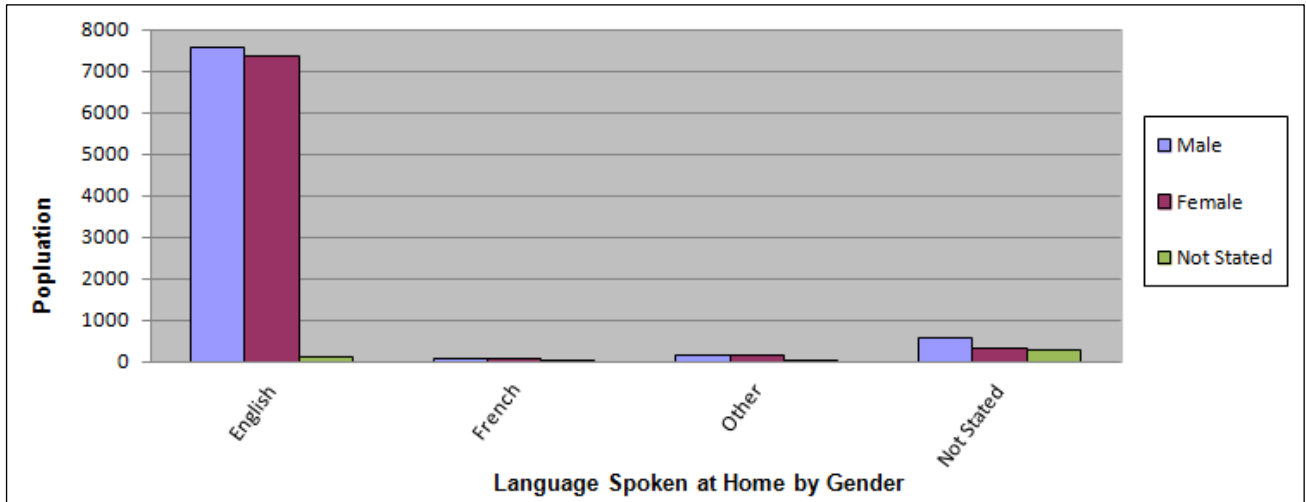


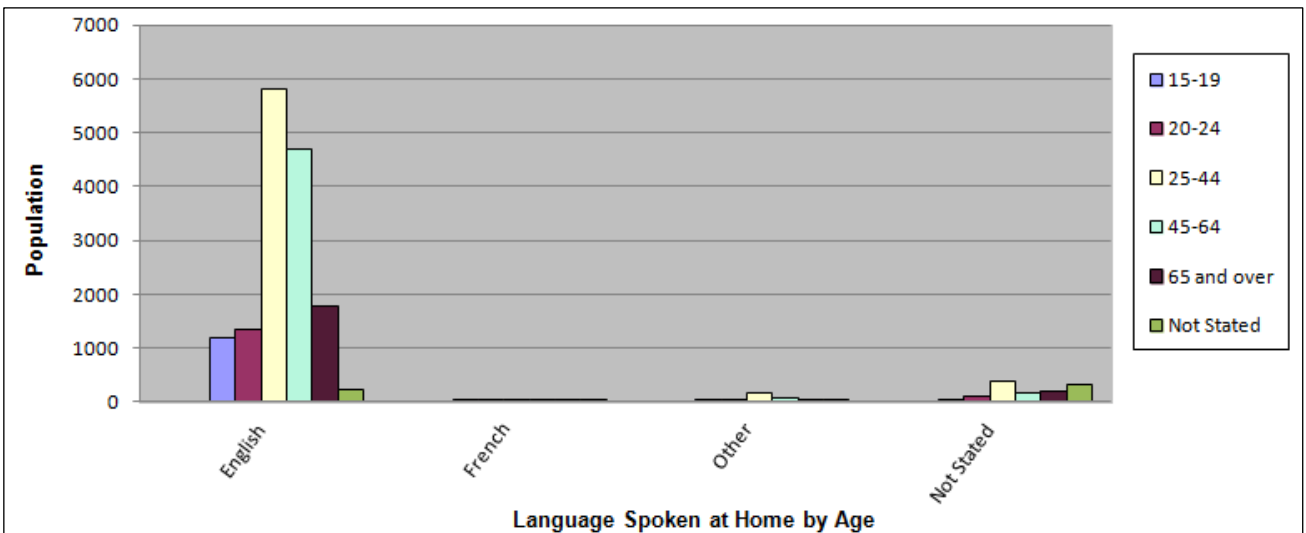
Table 18. Language spoken at home by age

Language spoken at Home	2012							
	0-4	5-14	15-19	20-24	25-44	45-64	65 and over	Not Stated
English			1,193	1,337	5,805	4,700	1,781	215
French			10	3	51	41	6	2
Other			18	17	150	59	27	5
Not Stated			34	113	373	158	187	316
Not Eligible to Answer*	1419	2455						
Total	1,419	2,455	1,255	1,470	6,379	4,958	2,001	538

Question was added in 2012 census

* Responses from Age 0-14 are counted as Not Eligible to Answer and omitted from the graph

Figure 15. Language spoken at home by age



Information by Enumeration Area

Table 19 and Figures 16-19 show the number of residents and the count of non-occupied dwelling types by enumeration area.

Table 19. Residents and non-occupied dwellings by enumeration area

Area	2012				2010				2009			
	Residents	Vacant	Under Construction	Empty Lot	Residents	Vacant	Under Construction	Empty Lot	Residents	Vacant	Under Construction	Empty Lot
101	254	9	3	7	192	3		7	208	2		7
102	124	3	0	0	128	4		1	135	4		
103	122	1	0	1	126			2	129	2		1
104	112	2	1	2	125	5		2	127	1		2
105	112	2	0	1	124				113	1		1
106	139	4	1	3	135	2		5	134	2		3
107	153	3	2	0	165	2		2	157			2
201	166	16	0	2	181	13		2	168	16		4
202	54	1	0	0	103	1			100			
203	186	1	0	0	173	2			168	4		
204	116	5	0	0	140	3			133	3		
205	58	0	1	0	58	1			57	1		
206	25	1	0	0	25				19			
207	164	1	0	0	171	4			181	2		
208	195	3	0	0	196	4			195	5		
301	154	2	0	0	147	12			155	2		
302	224	2	0	0	227				222	4		
303	135	3	0	0	143	1			151	1		
304	121	1	0	0	122				120			
305	388	8	0	0	405	8			406	8	1	
306	156	2	0	0	174	3			164	4	2	
307	112	4	0	1	108			2	120	1		2

Area	2012				2010				2009			
	Residents	Vacant	Under Construction	Empty Lot	Residents	Vacant	Under Construction	Empty Lot	Residents	Vacant	Under Construction	Empty Lot
308	181	3	0	3	187	1		3	193	1		2
309	261	2	0	3	260	2		5	256	3		5
310	446	49	0	0	479	43			359	94		
401	290	7	0	0	300	10			278	13		
402	303	27	0	0	282	17			323	10		
403	182	15	0	0	191	12			184	11		
404	234	4	0	0	247	1			247			
405	217	1	0	0	200	1			210	3		
406	142	0	0	0	145	2			153	1		
407	146	1	0	0	136	1			136	1		
408	175	2	0	0	185	2			184	2		
409	77	0	0	0	81				86			
410	127	1	0	0	133	1			146	1		
411	124	0	0	0	125	2			132	1		
412	109	0	0	0	111				115	1		
413	129	0	0	0	113	1			118			
414	223	2	0	0	228	2			228			
501	225	1	0	0	252				223	5		
502	228	1	0	0	217	1		1	219	5		
503	342	1	0	0	337	4			331	1		
504	92	0	0	0	93				95			
505	187	0	0	0	188	1			187			
506	59	2	0	0	70				73			
507	178	1	0	0	195	1			193	2		
508	196	3	0	0	206				206		1	
509	109	0	0	0	109				114			
510	184	4	0	0	203	2			207			

Area	2012				2010				2009			
	Residents	Vacant	Under Construction	Empty Lot	Residents	Vacant	Under Construction	Empty Lot	Residents	Vacant	Under Construction	Empty Lot
511	163	1	0	0	169				169			
512	187	1	0	0	184	1			185			
513	146	1	0	0	159	1			155			
601	426	1	0	0	440	2			449	2		1
602	282	1	0	0	287	1			293			
603	255	1	0	0	253	1			253	1		
604	170	0	0	0	190	1			187			
605	175	4	0	0	189				203			
606	236	0	0	0	230				250	2		
607	165	0	0	0	173				171			
608	187	1	0	0	195	1	1		208	1		
701	106	2	0	5	121	1		4	124			4
702	492	0	0	0	427				374			
703	272	63	0	13	227	93		16	194	114		15
704	349	5	0	0	343	11			293	18		
705	225	7	6	2	134	4	14	29	105	6	6	46
706	540	5	27	39	297	11	34	24	110	12	32	97
707	413	3	12	8	191	5	20	77	115	7	8	108
708	33	2	7	57	32		1	1	38		1	1
709	296	0	1	2	282	2	4	2	269	5	1	6
710	70	1	10	24	67		2	35	43	5	2	37
711	82	1	1	7	27	2	10	17	17	1	1	30
712	627	19	42	52	145	2	46	80	43	2	17	106
713	323	9	22	151	107	6	28	72	7	9	22	111
801	320	0	0	0	316	1			329	1		
802	528	0	0	0	538	1			542	1		
803	160	0	0	0	162		1		165	1		

Area	2012				2010				2009			
	Residents	Vacant	Under Construction	Empty Lot	Residents	Vacant	Under Construction	Empty Lot	Residents	Vacant	Under Construction	Empty Lot
804	145	0	0	0	145				149	2		
805	446	5	0	1	481	1		1	470	3		1
806	309	0	0	9	292	2	2	14	277	2	2	17
807	691	11	9	0	626	5	9	22	578	16	2	36
808	361	13	29	38	55	3	25	65	2	5	14	93
901	309	2	0	0	319				319	2		
902	495	4	1	1	502	6		3	483	7	1	3
903	490	79	0	0	611	29			555	56		
904	363	1	0	0	333	2	2	2	314	5	1	5
905	479	10	1	4	407	4	22	17	313	17	21	38
906	396	65	0	1	281	104	24		153	13	190	
907	253	3	8	6	75	12	18	50	7	4	10	94
908	74	12	18	34	0	2	6	1	0			9
Total	20,475	534	202	477	18,653	492	269	564	17,469	538	335	887

Figure 16. Population by enumeration area (101-308)

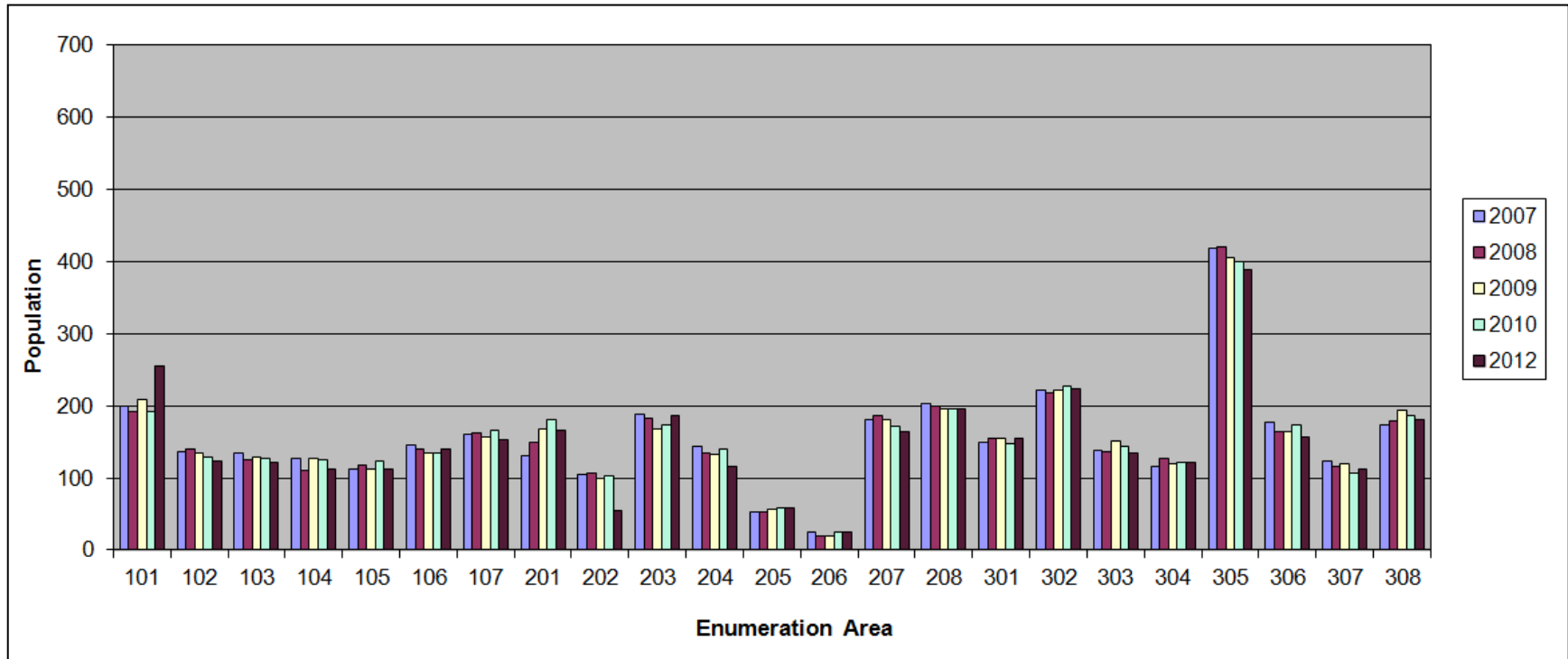


Figure 17. Population by enumeration area (309-507)

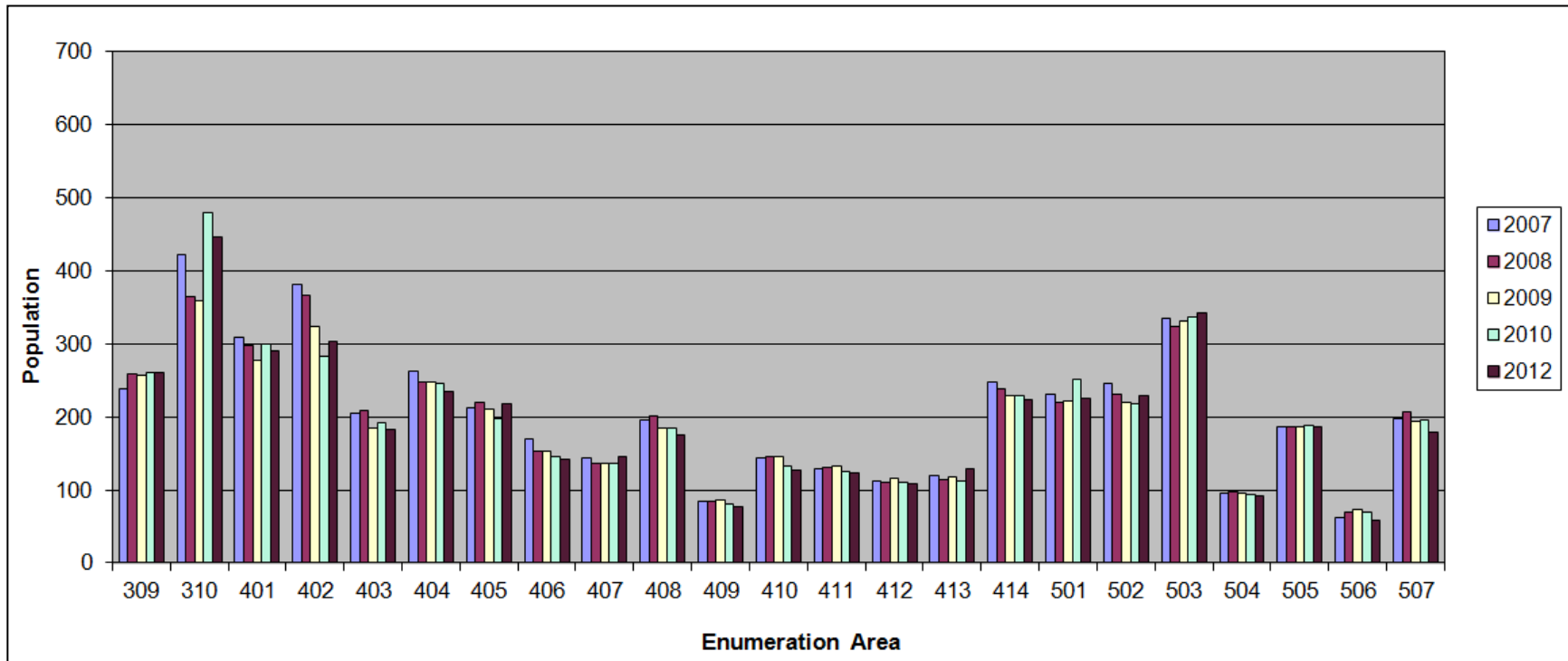


Figure 18. Population by enumeration area (508-707)

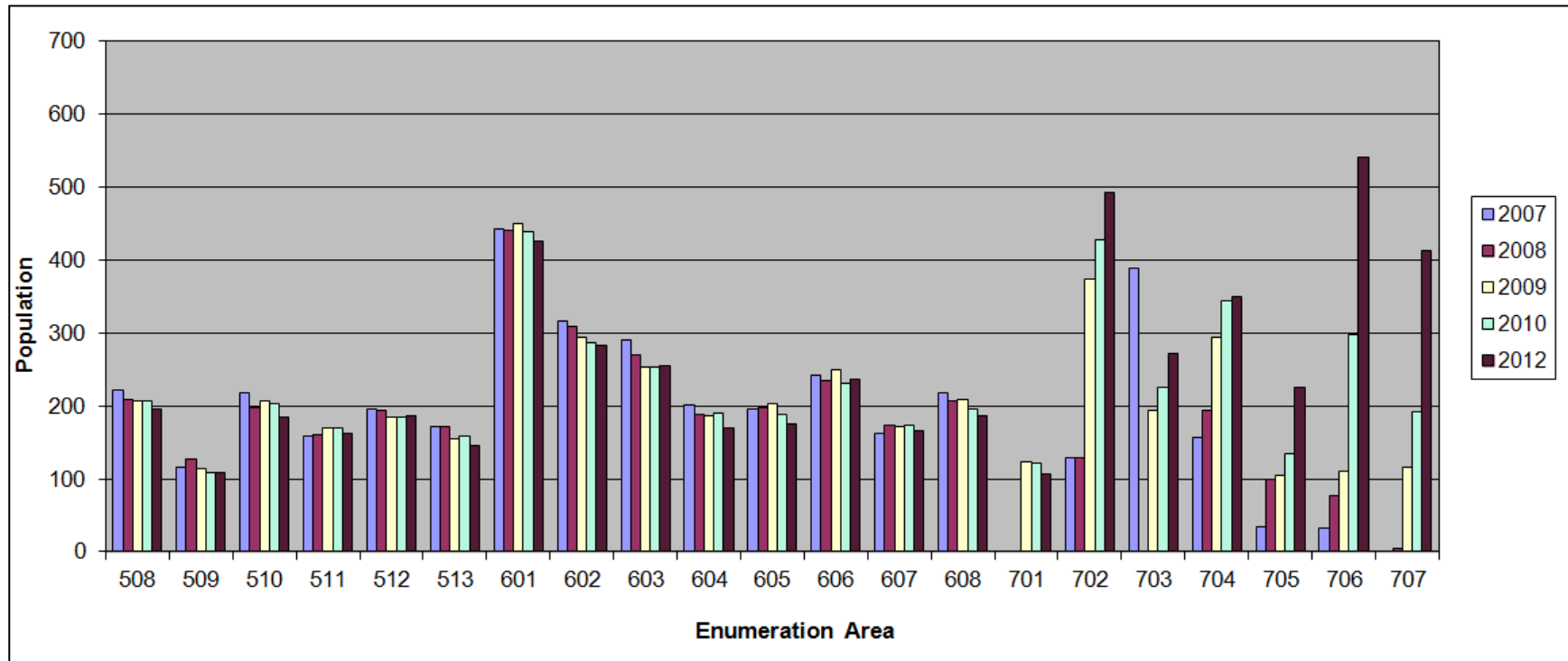
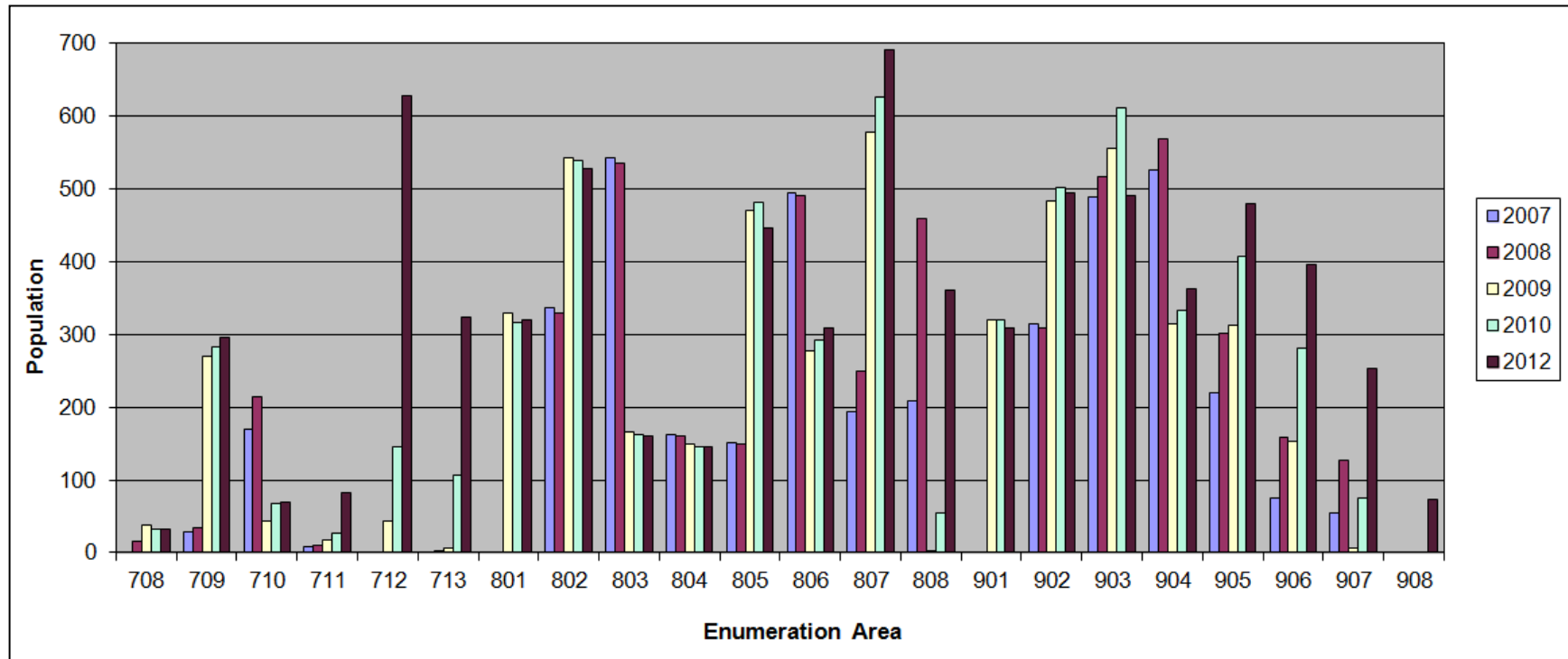


Figure 19. Population by enumeration area (708-908)



Contact Us:

**General Information
(All departments)**

780.992.6200

www.fortsask.ca



**CITY OF
FORT SASKATCHEWAN
ALBERTA**